

Now Offering: Tausight® ePHI Intelligence for Cloud and File Servers

The Challenge

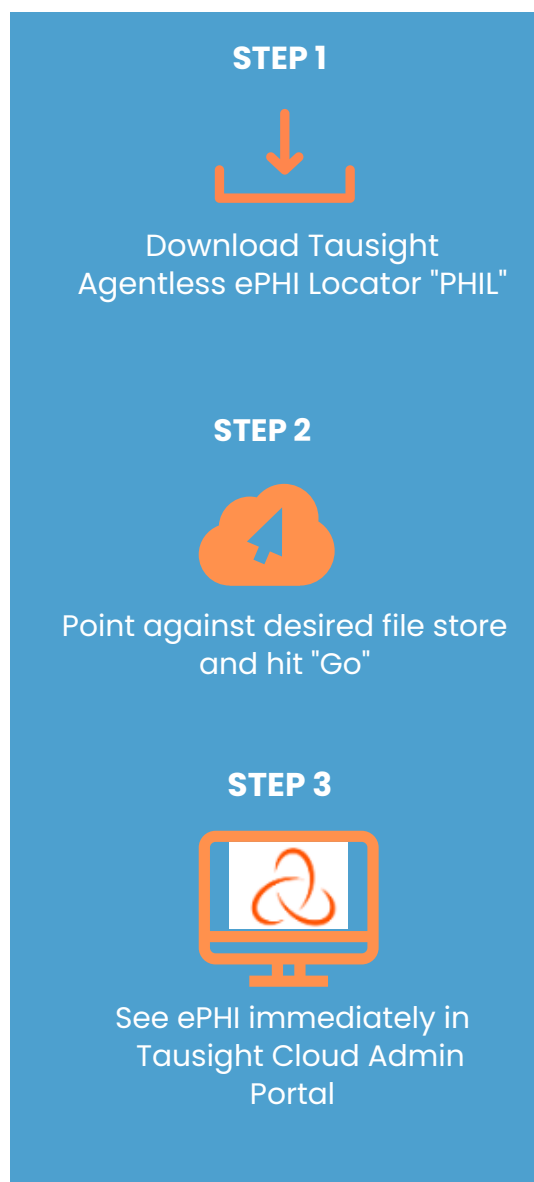
Network servers have been the #1 healthcare attack vector in 2023, accounting for 67% of breaches and 500,000+ compromised patient records. ¹

As patient data migrates and scales across cloud and shared environments, healthcare organizations struggle with the growing risk and unnecessary storage costs of "ePHI sprawl". Tausight helps organizations identify and minimize risk through easily being able to identify and inventory ePHI across their environment.

How Tausight Helps

With Tausight's new offering, healthcare organizations gain unmatched visibility and insight into ePHI across critical cloud and network infrastructure through an agentless ePHI locator that leverages a patented, NLP-based intelligence engine for ePHI discovery, inventory and insight. Upon downloading and running the Tausight PHI Locator, Tausight PHIL™, customers see real-time results within minutes.

- ✓ **IMMEDIATE TIME-TO-VALUE**
- ✓ **INTELLIGENCE INTO HIGHEST AREAS OF RISK**
- ✓ **NO COMPLEX DEPLOYMENT OR RESOURCES REQUIRED**
- ✓ **REDUCED STORAGE COSTS**



Available for Windows/Linux server, Cloud drive (GDrive, OneDrive) or NAS

¹- HIPAA Breach Report for February 2023 - Paubox

How Tausight Works

Tausight's ePHI Intelligence Platform leverages AI to find and unite a single view of ePHI, so healthcare compliance, privacy & IT teams can quickly reduce risk.

ePHI Risk Identification

Tausight's powerful NLP-powered PHI security intelligence platform does immediate, out-of-the-box discovery of ePHI without rules or configuration. Tausight finds structured and unstructured patient data across endpoints, clouds and IT infrastructure.

Unlike traditional security and data management solutions, Tausight's patented technology finds ePHI in all of its shadow forms – including documents and PDF's in file backups, emails, screenshots and clipboard images.

Once ePHI is discovered, Tausight visualizes an inventory of sensitive data categorized by file location(s), volume of records, file age(s), and more. This helps organizations find "hot spots" of shadow ePHI so they can assess their next step.

About Tausight

Tausight is healthcare's first ePHI Intelligence Platform that leverages patented AI models to identify sensitive healthcare data.

Founded by healthcare security pioneer, David Ting, and led by healthcare visionary, Frank Nydam, Tausight is backed by top-tier healthcare investors, Polaris Partners, Flare Capital Partners, and .406 Ventures, and is based in Boston, Massachusetts. For more information, visit: www.tausight.com and follow us on [LinkedIn](#) and [Twitter](#) (@Tausight).

